



**BREMERHAVEN
BARRIEREFREI**

**BREMERHAVEN BARRIER-FREE
«BARRIÄRFRI»**

**... ONE CITY FOR ALL - ETT PAR EXEMPEL
LARS MÜLLER 26.04.2023 GÖTEBORG**



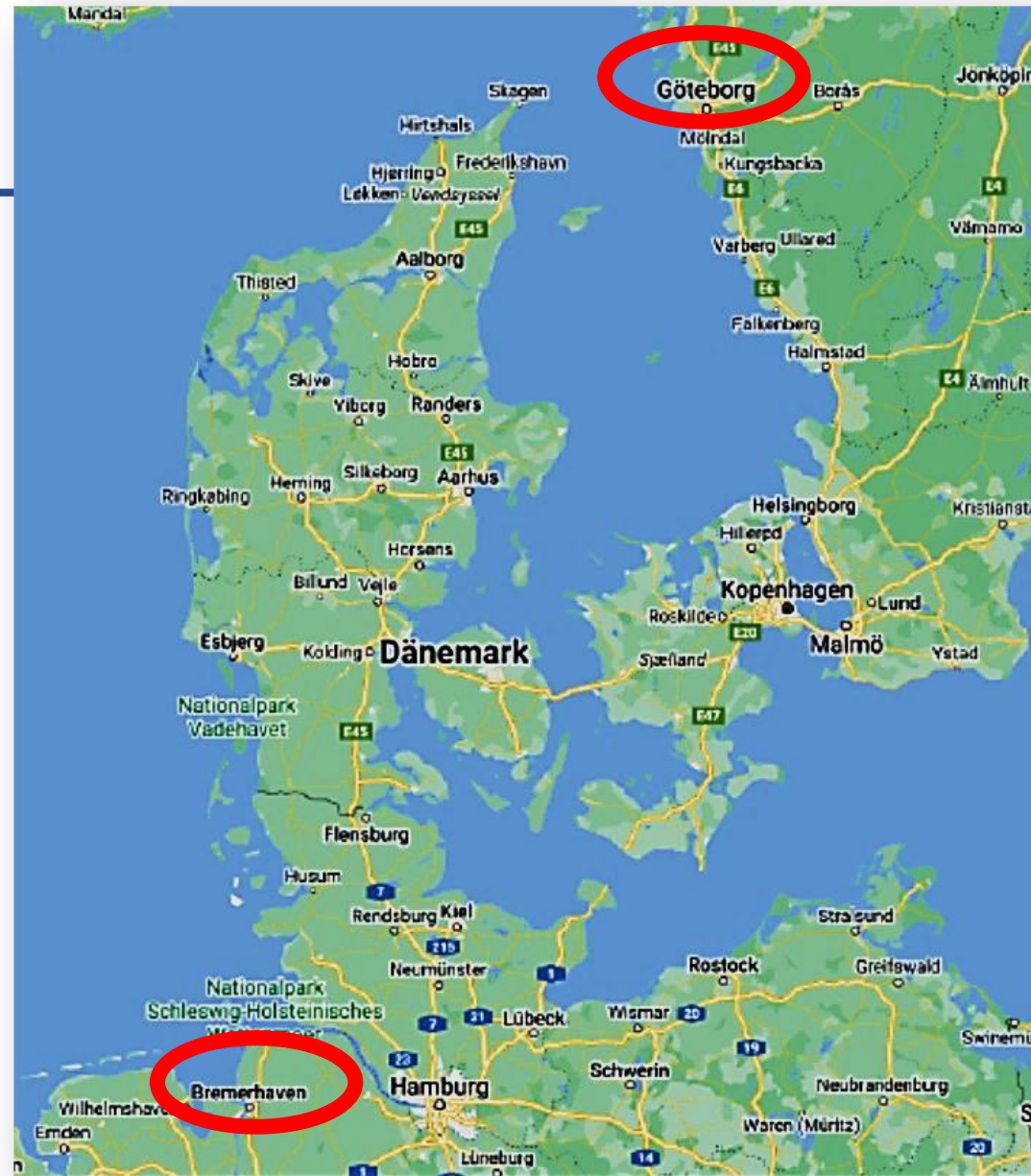
**SEESTADT
BREMERHAVEN**

Who am I ?

- LarsMüller
- Amtsleiter (Leader) of the Office for People with Disabilities
- Lawyer
- Magistrate of the city of Bremerhaven
- During my law studies, I worked part-time in a medical supply store as a rehabilitation technician for about 7,5 years
- part-time I completed the training as a specialist planner for barrier-free construction in Dresden. I was examined by the Chamber of Architects in Saxony.
- Municipal Representative for the disabled people in Bremerhaven

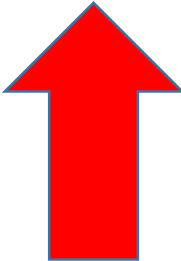


Bremerhaven



Göteborg

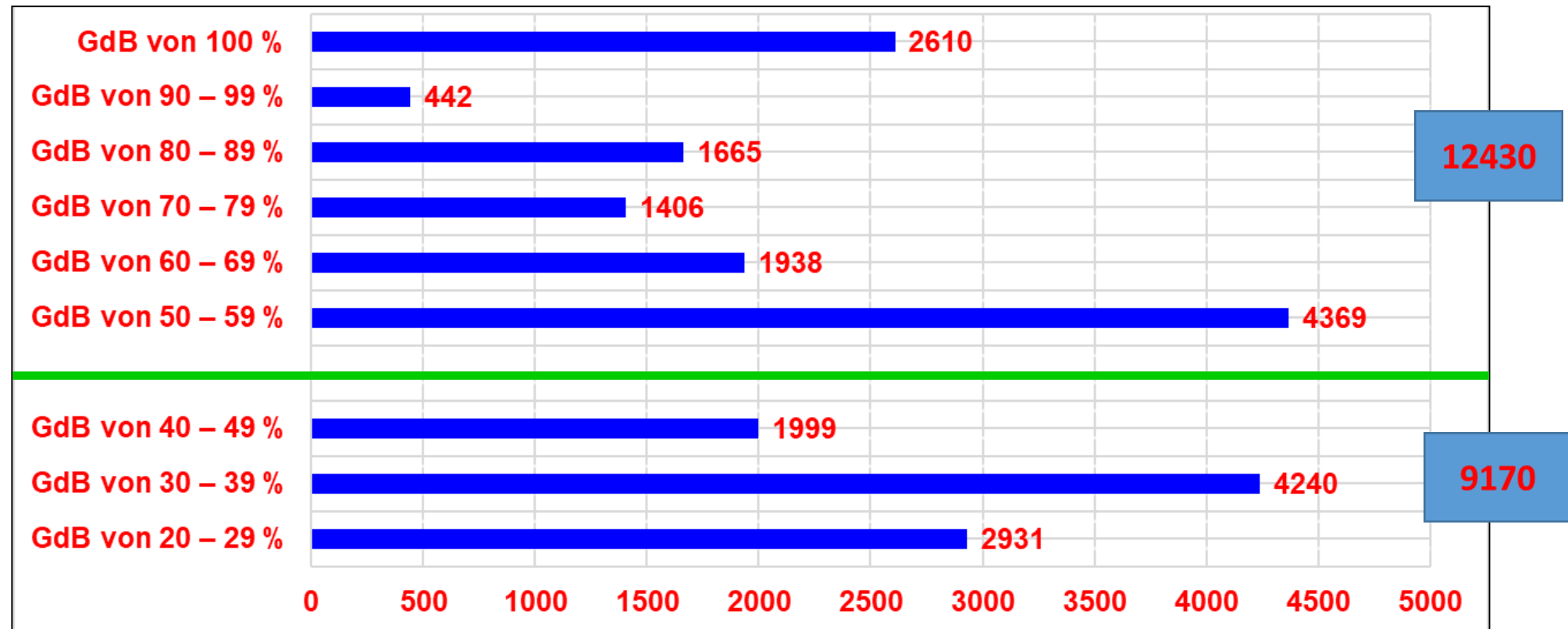
Where is my Government Office

Dezernat I	Dezernat II	Dezernat III	Dezernat IV	Dezernat V	Dezernat VI	
Oberbürgermeister Grantz <i>Vertretung:</i> Bürgermeister Neuhoff	Bürgermeister Neuhoff <i>Vertretung:</i> Oberbürgermeister Grantz		Stadtrat Frost <i>Vertretung:</i> Stadtrat Schomaker	Stadtrat Parpart <i>Vertretung:</i> Stadtrat Caloglu	Stadtrat Schomaker <i>Vertretung:</i> Stadtrat Frost	Anstalten u. Wirtschaftsbetriebe (in Klammern : organisatorische Zuordnung)
I/1 Magistratsdirektor MK Magistratskanzlei I/6 Referat Innenrevision/ Antikorruption I/8 Referat für Wirtschaft, Tourismus und Wissenschaft I/9 Direktor der OPB 00 Büro der StVV* 11 Personalamt 11 A Arbeitssicherheit 14 Rechnungsprüfungs- amt* 34 Standesamt 37 Feuerwehr 53 C Corona-Koordinierung 83 Amt für kommunale Arbeitsmarktpolitik 90 Polizeiführungsstab 91 Bürger- u. Ordnungsamt 93 Schutzpolizei 94 Kriminalpolizei	20 Stadtkämmerei 21 Stadtkasse 30 Rechts- und Versicherungsamt 61 Stadtplanungsamt		40 Schulamt 41 Kulturamt 41 A Stadtarchiv 41 B Stadtbibliothek 43 Volkshochschule 45 Historisches Museum Bremerhaven/ Morgenstern-Museum 46 Theater u. Orchester 51 Amt für Jugend, Familie und Frauen	V/1 Sozialreferat 50 Sozialamt 57 Amt für Menschen mit Behinderung 	VI/1 Baureferat 62 Vermessungs- und Katasteramt 63 Bauordnungsamt 66 Amt für Straßen- und Brückenbau	a) Anstalt öffentl. Rechts: Entsorgungsbetriebe Bremerhaven (VI) b) Wirtschaftsbetriebe: Seestadt Immobilien (I, II, VI) Betrieb für Informa- tionstechnologie (I) Rettungsdienst Bremerhaven (I) Helene-Kaisen-Haus (IV)
Dezernat VII	Dezernat VIII	Dezernat IX	Dezernat X	Dezernat XI		
Stadtrat Dr. Eversberg <i>Vertretung:</i> N.N.	Stadtrat Skusa <i>Vertretung:</i> Stadtrat Bödeker	N.N. <i>Vertretung:</i> Stadtrat Dr. Eversberg	Stadtrat Bödeker <i>Vertretung:</i> Stadtrat Skusa	Stadtrat Caloglu <i>Vertretung:</i> Stadtrat Parpart		
67 Gartenbauamt	22 Steueramt	58 Umweltschutzamt	52 Amt für Sport und Freizeit	53 Gesundheitsamt		



degree of disability

About 115.000 residents



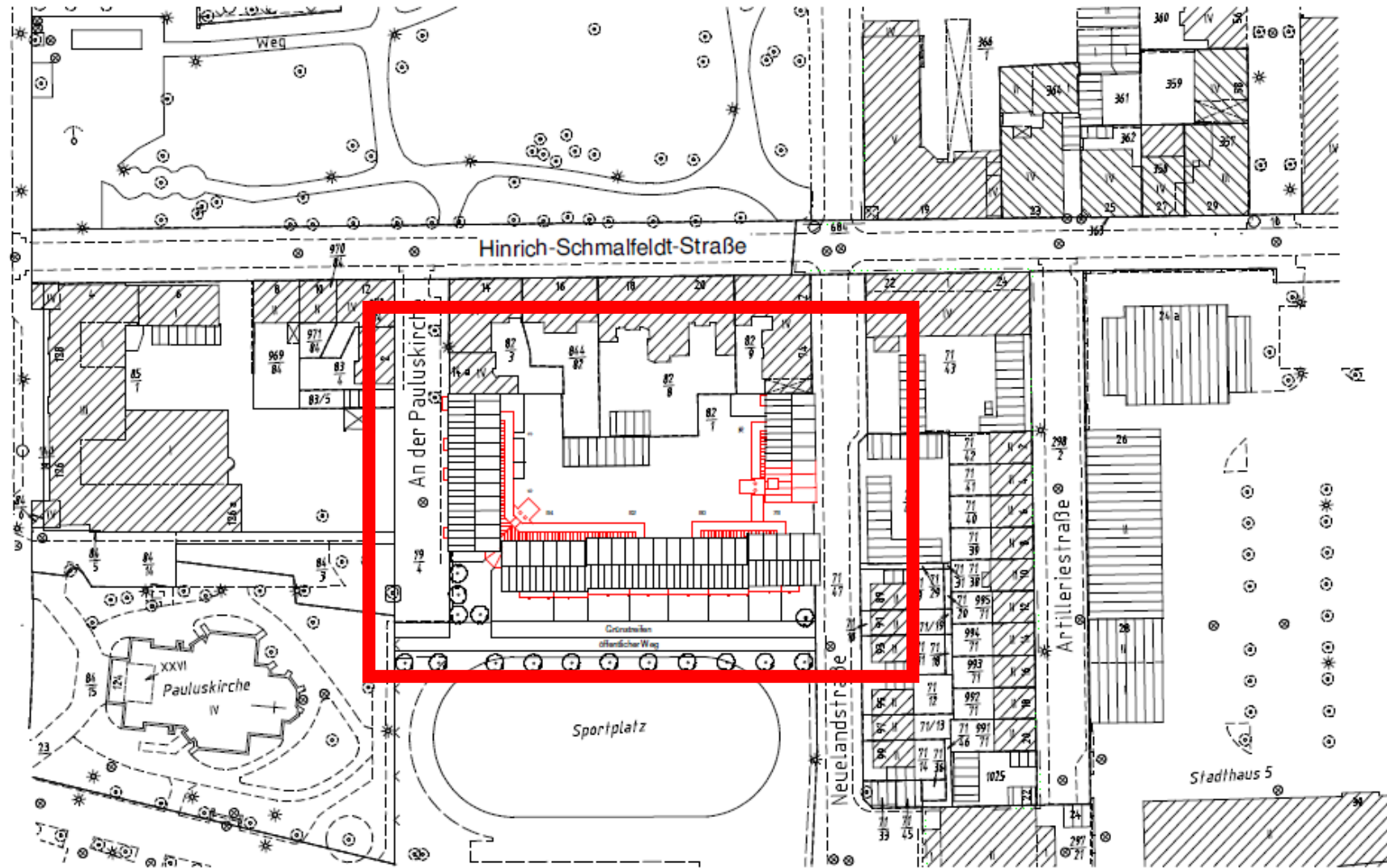
building in stock

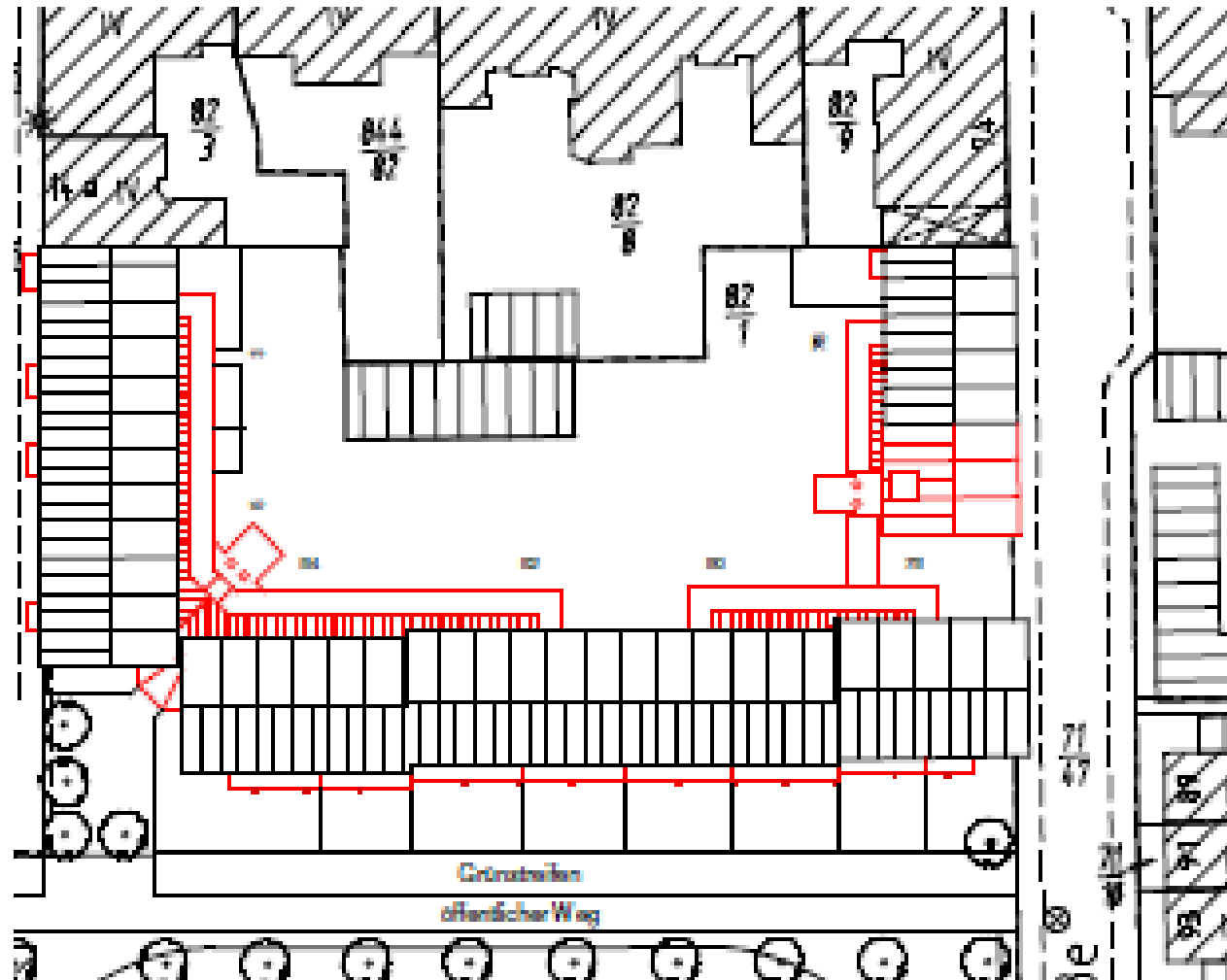
new building

- Year of construction: 1958
 - Conversion: 2014-2016
 - Number of units old: 62
 - Number of units new: 54
 - Cost €6,173,000
 - Realized by
 - municipal housing association
- Also our urban housing company

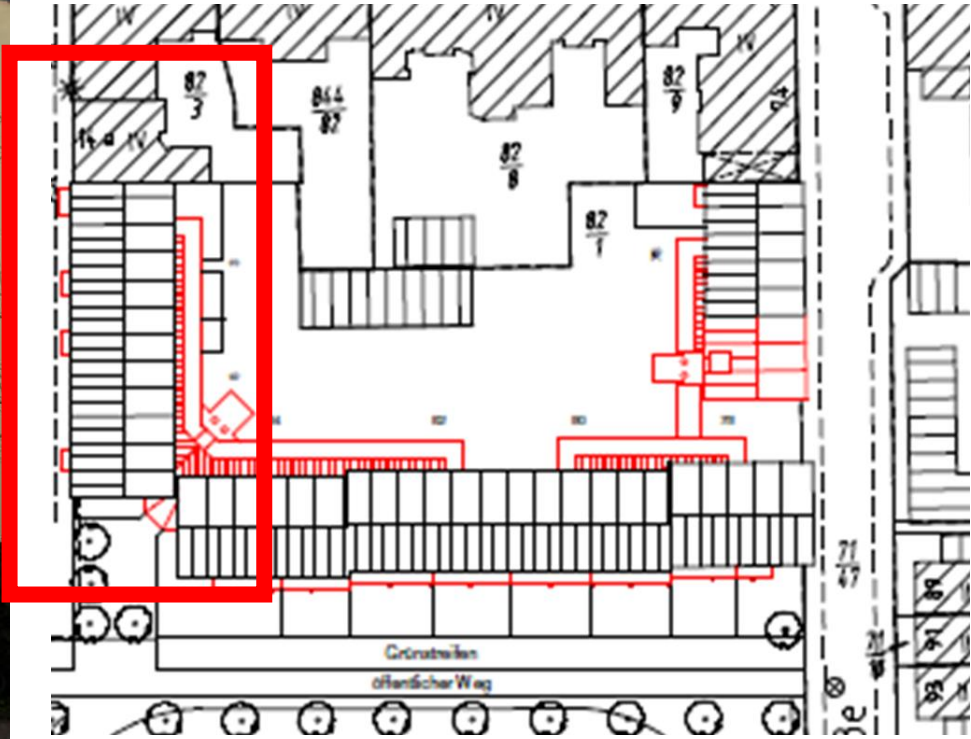


Neuelandstrasse in Bremerhaven





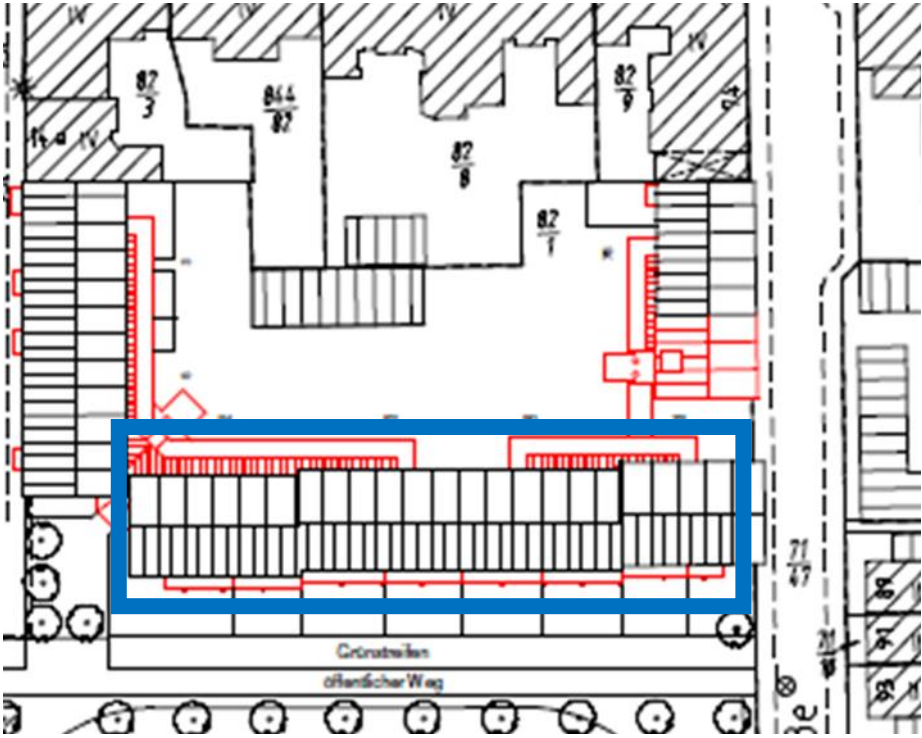
Neulandstrasse before



Neulandstrasse afterwards



Neulandstrasse before



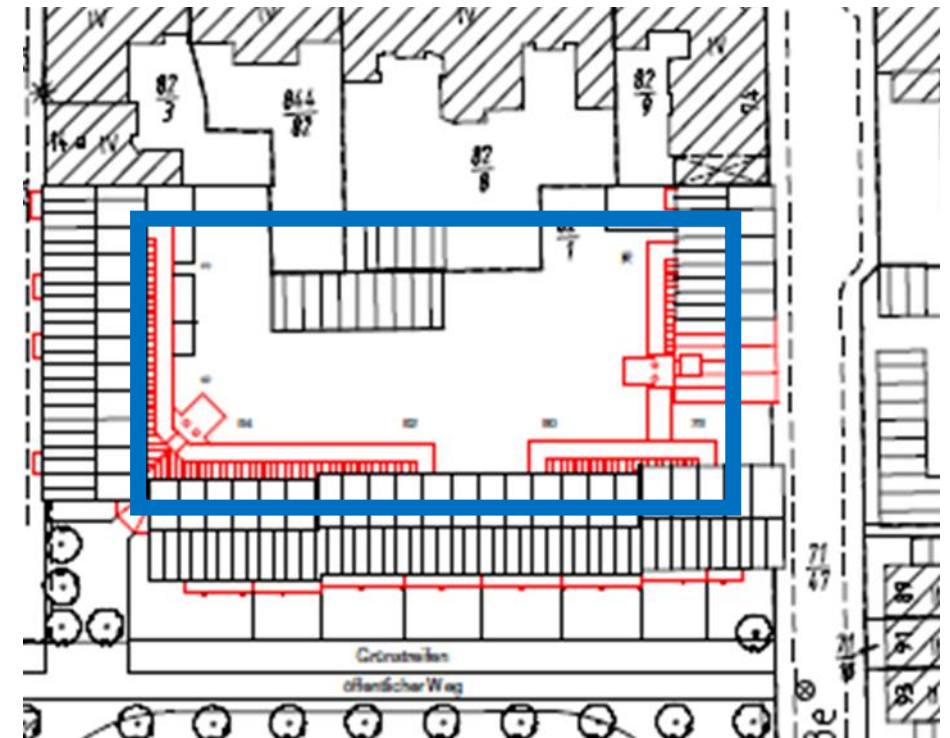
Neuelandstrasse afterwards



Neuelandstrasse afterwards



Neulandstrasse before inner courtyard



Neuelandstrasse afterwards inner courtyard



Neuelandstrasse before inner courtyard

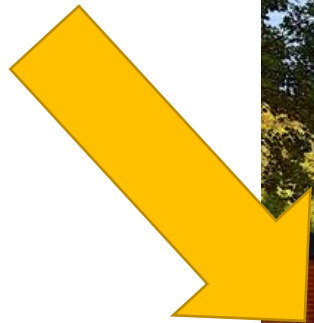


Neulandstrasse afterwards inner courtyard



Neuelandstrasse afterwards inner courtyard

Meeting Point



Neuelandstrasse afterwards inner courtyard



Little money, big task: flagship projects that have received nationwide attention have emerged → one of them the **spiral house**

Spiral House



Little money, accessibility of the floors, social interaction, **social housing**, community, in the countryside with a garden and with a meeting place for joint activities, almost barrier-free

The implementation of the idea



The implementation of the idea

A completely new rear view with a corresponding use of the garden. The garden is maintained by the residents of the house. This ensures social cohesion. The house is social housing. During the conversion phase, the tenants were allowed to stay in the house rent-free.



The implementation of the idea



The extension also created a kind of balcony or terrace that provides additional living space and quality of life. This room is also used a lot

Space for
gatherings,
barbecues,
gatherings,
courtyard parties,
...



STÄWOG has built a new house for students at Heinrichstraße 34 in the Lehe-Goethestraße district. The Ultra-Vario house is one of 19 nationwide model projects for the construction of Vario apartments, funded with funds from the research initiative "Future Construction" of the Federal Institute for Building, Urban and Spatial Research. The house in itself is a future-proof housing offer, but at the same time also gives the quarter future prospects. The Ultra-Vario house at Heinrichstraße 34 allows a flexible response to future demographic developments, new trends in types of housing and the uncertain housing market in the district without major renovations. Eleven sustainable and affordable apartments were created, which can be used in a variety of ways with high architectural and living quality. The "1000 possibilities in 4 walls" range from single rooms with a small kitchen to shared flats for students to apartments suitable for seniors. This is made possible by the repetitive, clear and symmetrical floor plan structure of the residential units and the targeted arrangement of installation strands.

The new building meets all the criteria of sustainable housing and will receive the quality seal for sustainable housing (NaWoh) in the Vario apartments version. In addition to the ecological balance and energy standards, ecologically sustainable and innovative ideas were implemented in the project, from the economical energy supply through an integrated combined heat and power plant to the mobility concept, in which the parking space fee goes into setting up a car sharing station in the immediate vicinity. This is not the only way that the property looks beyond its own floor plan. On the one hand, the Bremerhaven district of Lehe-Goethestraße is one of the poorest districts in Germany, the unemployment rate in the district is almost 30 percent, and around 39 percent of the people are heavily indebted. Magnificent, well-kept facades from the Gründerzeit stand next to dozens of run-down properties.

For a long time, one of these “junk properties” stood at Heinrichstraße 34, and it was ultimately unavoidable that it would be torn down. The façade of the new building blends in with the built neighborhood of the street in terms of appearance and design, so that the charm and attractiveness of the Gründerzeit district is preserved for the future. The lighthouse project at Heinrichstrasse 34 is embedded in a holistic strategy that focuses on several investments in a small area. As the first form of the Ultra-Vario house, STÄWOG chose a pure student house, because these represent a new and stabilizing "pioneer group of residents" for the socially segregated quarter. The offer is popular with the target group, all 26 living spaces are rented. In the course of this, STÄWOG, together with several partners, also established the "Education Buddies" program in the district. Students are given the opportunity to live in five rooms in the house rent-free if they take on a learning sponsorship for pupils at the Oberschule am Ernst-Reuter-Platz (ERNST!). **Lets have a look....**



Demolition, new construction, completion and today students with and without disabilities live here together. For a possible other use, the prerequisites are already created due to the construction. Senior-friendly construction would also be possible. And the students would be the buddies. So it would be a multigenerational house.

Article 2

#3

Nobody may be disadvantaged because of his disability. People with disabilities are under the special protection of the state. The state promotes their equal participation in community life and works towards eliminating existing disadvantages.

Accessibility is described and defined in a law that I was able to partially work on.
Technical regulations specify this.

Structural and other facilities, means of transport, technical items, information processing systems, acoustic and visual information sources and communication facilities as well as other designed areas of life are barrier-free if they can be **found** by people with disabilities in **the usual way, without particular difficulty and generally without outside help and are usable**. The use of necessary aids due to the disability is permitted.

DIN
18040 I

- Buildings open to the public

DIN
18040 II

- Apartments
- Housing

DIN
18040 III

- Traffic areas, public space

DIN =
German industry standard

It is a guideline to many
things being built

DEUTSCHE NORM

September 2011

DIN 18040-2

DIN

ICS 11.180.01; 91.010.99

Mit DIN EN 81-70:2005-09
Ersatz für
DIN 18025-1:1992-12 und
DIN 18025-2:1992-12

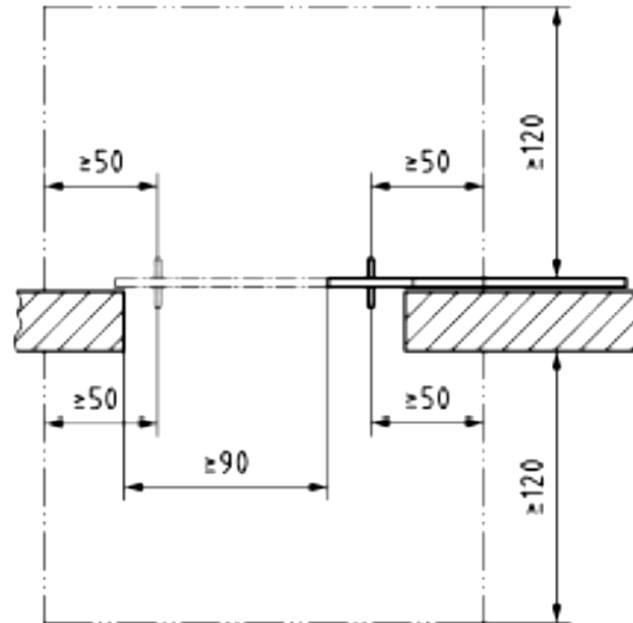
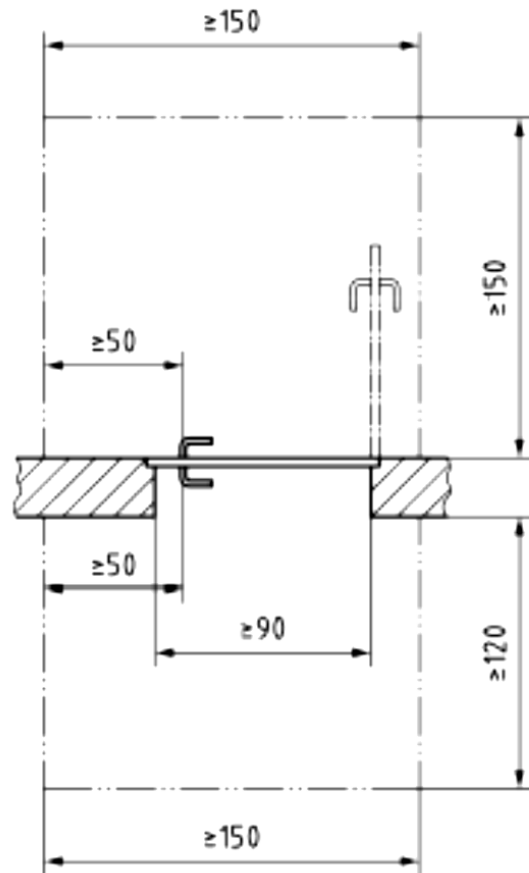
**Barrierefreies Bauen –
Planungsgrundlagen –
Teil 2: Wohnungen**

Construction of accessible buildings –
Design principles –
Part 2: Dwellings

Construction de bâtiments accessibles –
Principes de planification –
Partie 2: Logements

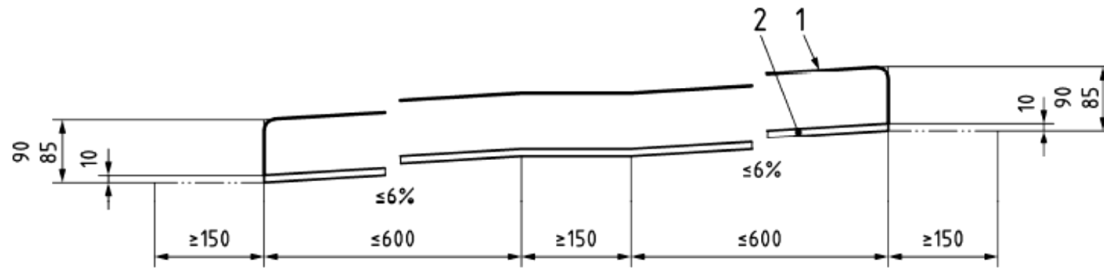
scope of application

This part of the standard applies to the barrier-free planning, execution and furnishing of apartments and buildings with apartments and their outdoor facilities that are used for development and residential use. The requirements for the infrastructure of the buildings with apartments also take unrestricted use with wheelchairs into account. Within the apartments, a distinction is made between – barrier-free apartments and – barrier-free apartments R which can be used without restrictions with a wheelchair. ANNOTATION:Unrestricted usability with a wheelchair refers to the geometric requirements resulting from the underlying dimensions of standard wheelchairs (maximum width 70 cm and maximum length 120 cm).The additional or more extensive requirements for apartments for barrier-free and unrestricted use of wheelchairs are marked with an R. Additional or different requirements may be necessary for residential complexes for special user groups and apartments for special users. The standard applies to new buildings. **It can be used analogously for the planning of conversions or modernizations.** The protection goals pursued with the requirements according to this standard can also be fulfilled in other ways than specified in the standard. ANNOTATIONAs a rule, the individual sections first state the protection goals to be achieved as a prerequisite for accessibility. Then it is shown how the **protection goal** can be achieved, if necessary differentiated according to the different needs of different groups of people. All dimensions are finished dimensions. Deviations in the design can only be tolerated if the function intended in the standard is achieved.



We set the height of the door handle to 1.05 m, although 85 cm is sometimes required.

This comes from DIN 18040 II

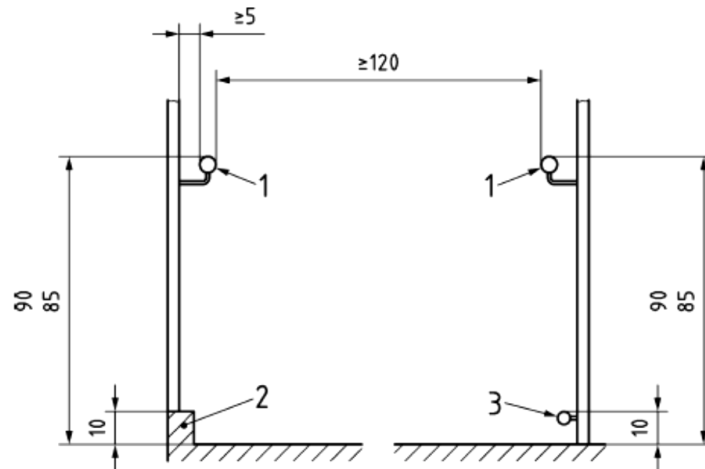


Legende

- 1 Handlauf
- 2 Radabweiser

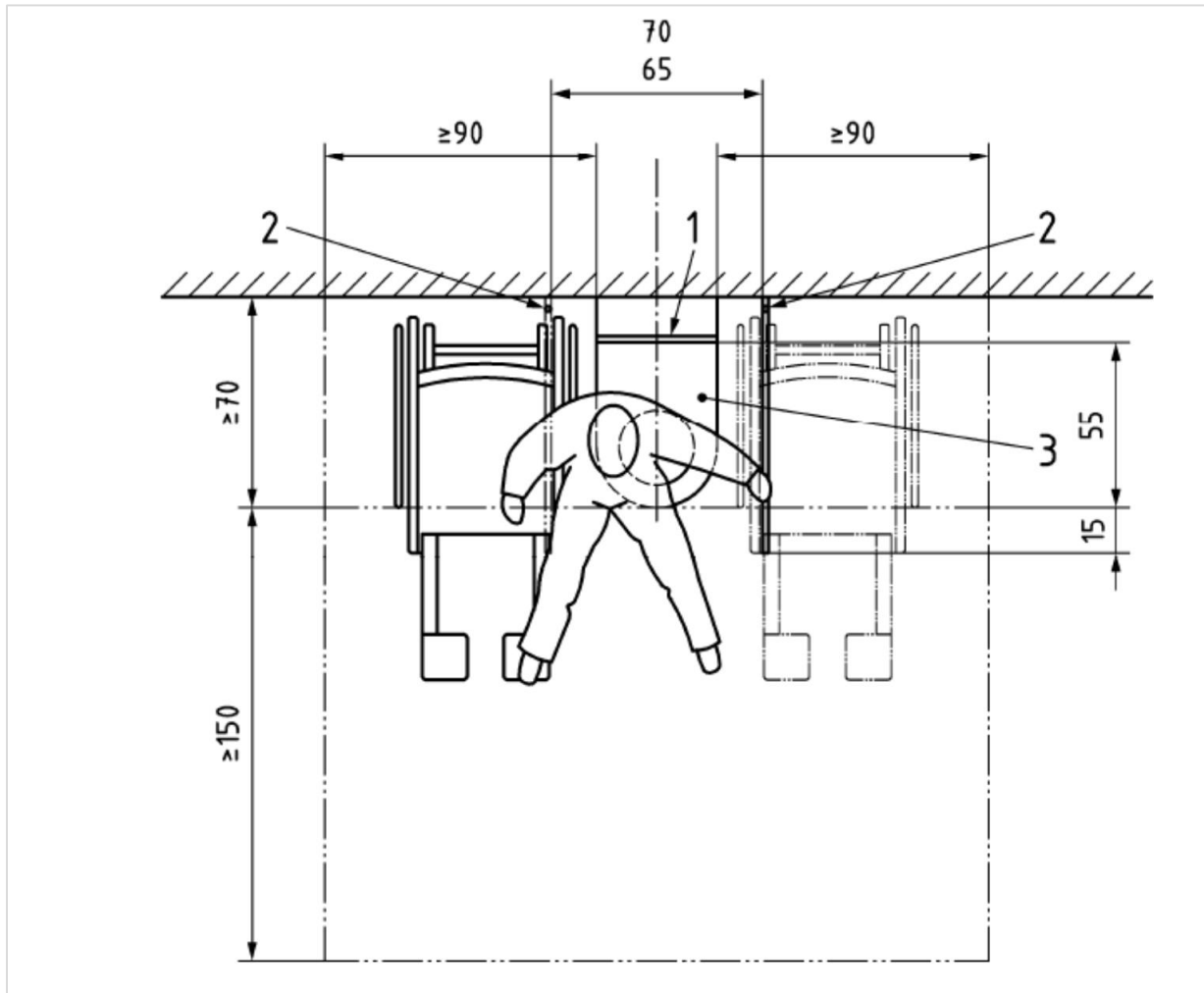
Bild 7 — Rampe, Seitenansicht

Maße in Zentimeter



Ramp with wheel deflectors as protection and handrails on both sides.

WC in public buildings

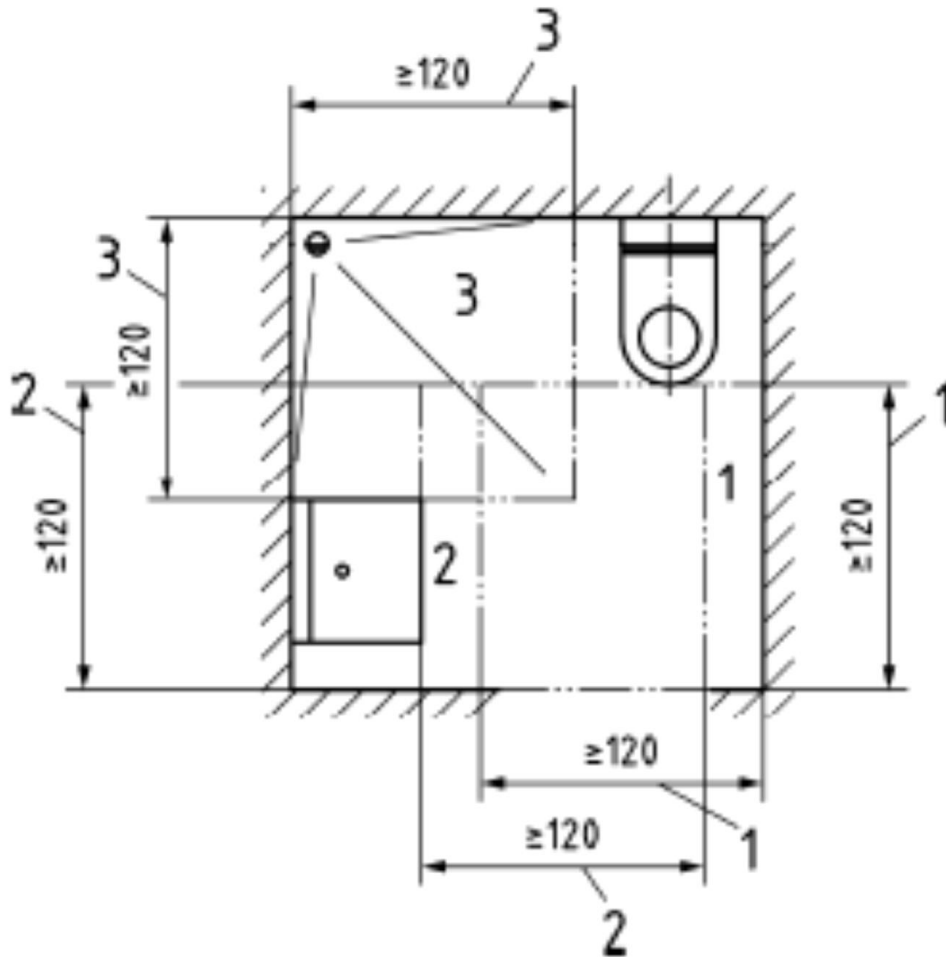


Legend

1 back support

2 folding support handles

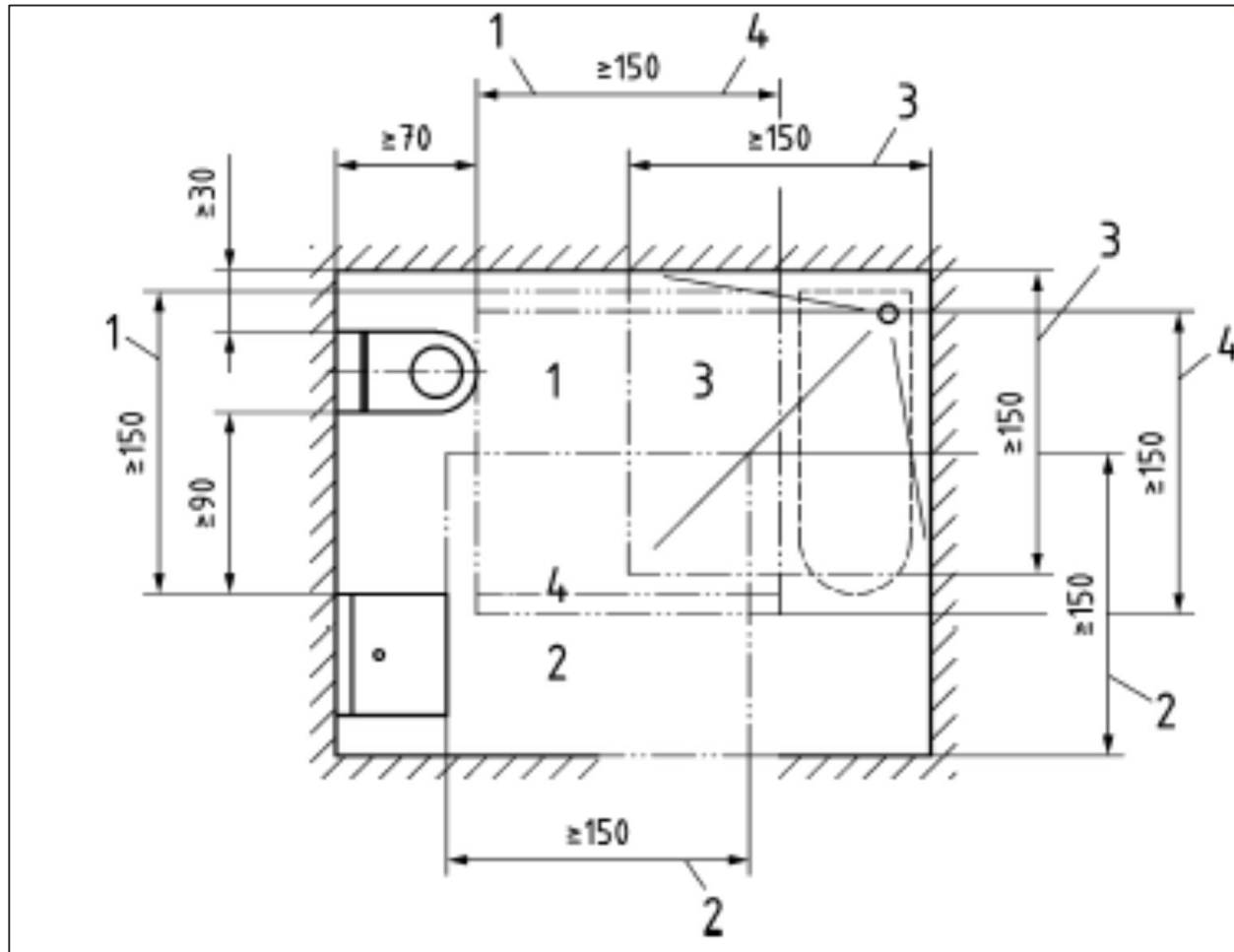
3 toilet bowls



Legend

- 1 movement area in front of the toilet bowl
- 2 Movement area in front of the washbasin
- 3 movement area in the shower area

WC in private buildings



Legend

- 1 movement area in front of the toilet bowl
- 2 Movement area in front of the washbasin
- 3 movement area in the shower area
- 4 Movement area in front of the bathtub, if available

Example of overlaying the movement areas in sanitary rooms for wheelchair users

Examples and possible solutions



Examples and possible solutions



Examples and possible solutions



Examples and possible solutions



Barrier-free tourist service chain





**Mobile
barrier-free
toilet for
events in
public
spaces**



**Strongly tactile and
visually contrasting
signaling device in
the bus**



Barrier-free beach chair to participate in what is happening on the beach not only on the edge.



Tactile model at the main train station

Barrier-free access to touristic information



via internet



or directly at the tourist information office

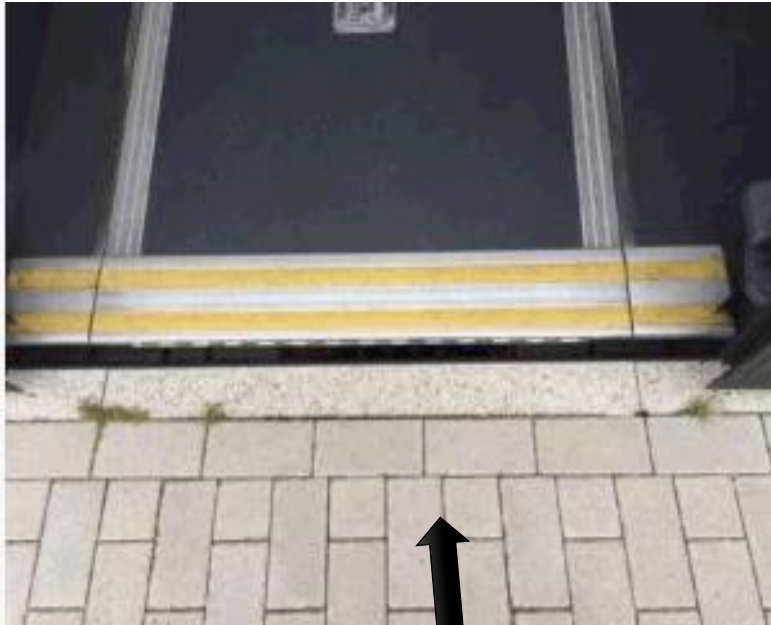


free brochures –
as download, to pick
up or by mail



tactile model of Bremerhaven
behind the Tourist Info

Examples



kneeling function:
barrier-free access
between curbside and
bus

**Our bus company offers
special training for people
with disabilities and for
seniors - free of charge.**



In Bremerhaven, only low-floor buses have been used in public transport since 2005. Another special feature of the vehicles is the "kneeling function". The buses can be lowered on one side to facilitate boarding.

**Accessibility for 10% of people
MUST**

**Accessibility is about 30% of people very advisable
– a can**

**But for everyone, accessibility also means...
Comfort**

I would like to thank you very much for the invitation. I consider it a great honor that your delegation had the idea of inviting me to this event in September 2022. And I am happy about the exchange here with Bremerhaven. Thanks also to the municipal housing company Stäwog, with whom we work on many points. I'm still available for questions and answers and discussions today and tomorrow. And thank you for being able to follow my little English so far. Thanks.

Lars Müller
Amtsleiter | Kommunalen Behindertenbeauftragter
Fachplaner für barrierefreies Bauen (EIPOS)
Magistrat der Stadt Bremerhaven
Amt für Menschen mit Behinderung
- Örtliche Fürsorgestelle -
2. Obergeschoss, Zimmer 2.44
Barkhausenstrasse 22
27568 Bremerhaven
Telefon: 0471 590-2454
E-Mail: Lars.Mueller@magistrat.bremerhaven.de
Internet: www.bremerhaven.de